

Streets Network subject to further refinement through Precinct Planning

Any lands within the Provincial Greenbelt Area are not part of the urban area and are subject to the policies of the Greenbelt Plan.

- Overlays**
- Employment Areas
 - Community Areas
 - Natural Heritage System
 - Regional Urban Boundary
 - Urban Centres
 - Town Centres
 - Primary Urban Boulevards
 - Secondary Urban Boulevards
 - Corridors
 - Planned Corridors
 - Support Corridor
 - Transit Station
 - Planned Major Transit Station
 - Primary Major Transit Station Areas
 - Greenbelt Plan - Protected Countryside Area
 - Urban Growth Centre
 - Gateways

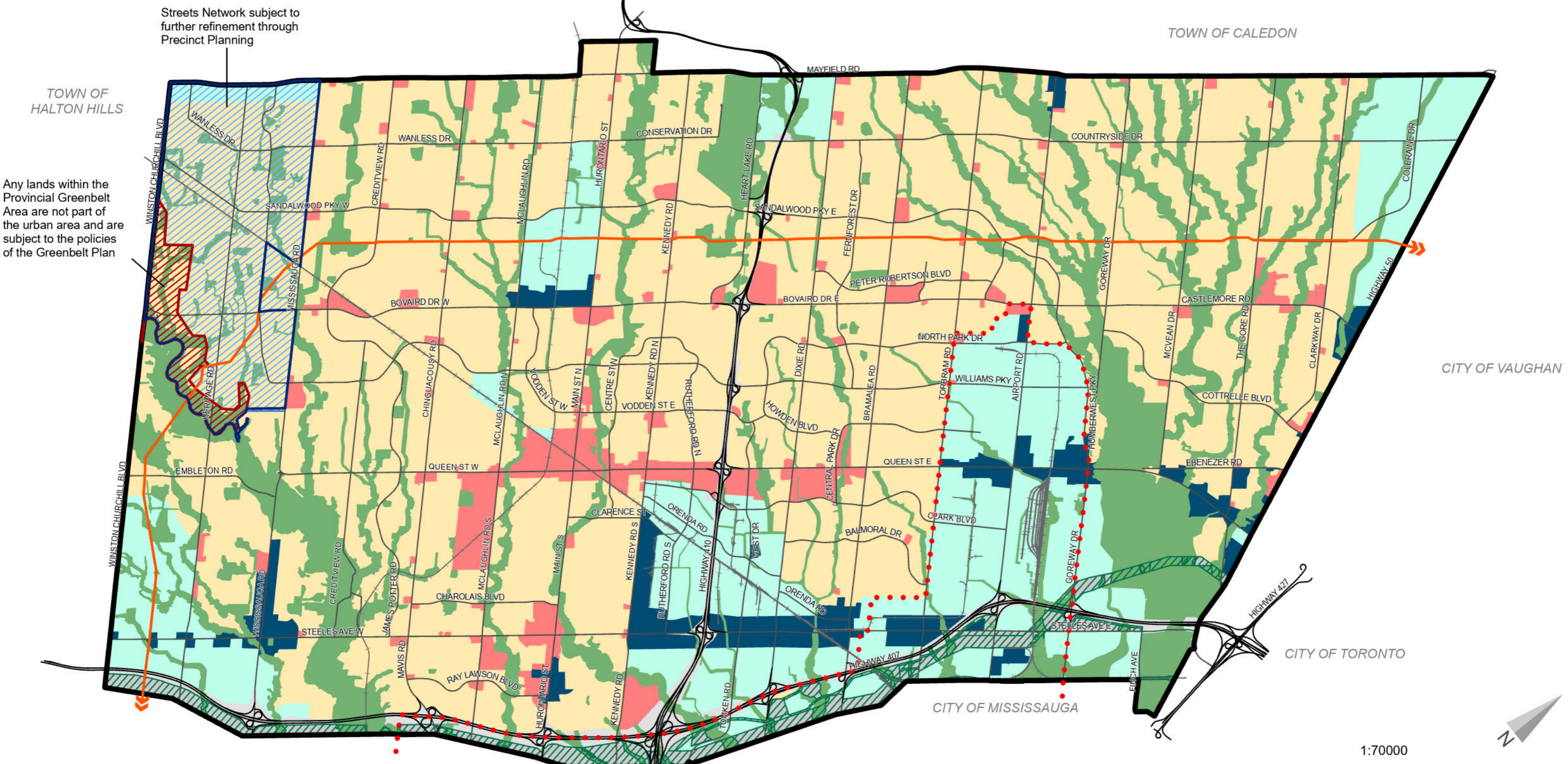
Base Map Features

- Railway
- Provincial Highways / Goods Movement Corridors
- Major Streets
- Parkway Belt West

Scale: 1:70000
0 0.5 1 2 3 4 Kilometres

Date: September 2023
Planning, Building and Economic Development
Brampton Plan

This map forms part of the Official Plan of the City of Brampton and must be read in conjunction with the text, other schedules and secondary plans. The boundaries and alignments of designations and overlays on this schedule are approximate and are not intended to be scaled.



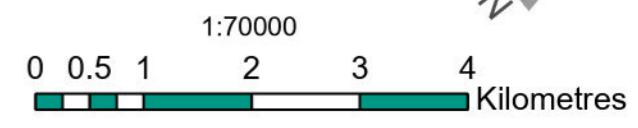
- Designations**
- Mixed Use
 - Neighbourhoods
 - Employment
 - Mixed-Use Employment

- Overlays**
- Natural Heritage System
 - Parkway Belt West

- Overlays**
- Lester B. Pearson International Airport (LBPIA) Operating Area
 - Greenbelt Plan
 - TransCanada Pipeline

- Overlays**
- Heritage Heights Secondary Plan Area
 - North West Brampton Development Area

- Base Map Features**
- Railway
 - Highway
 - Major Streets



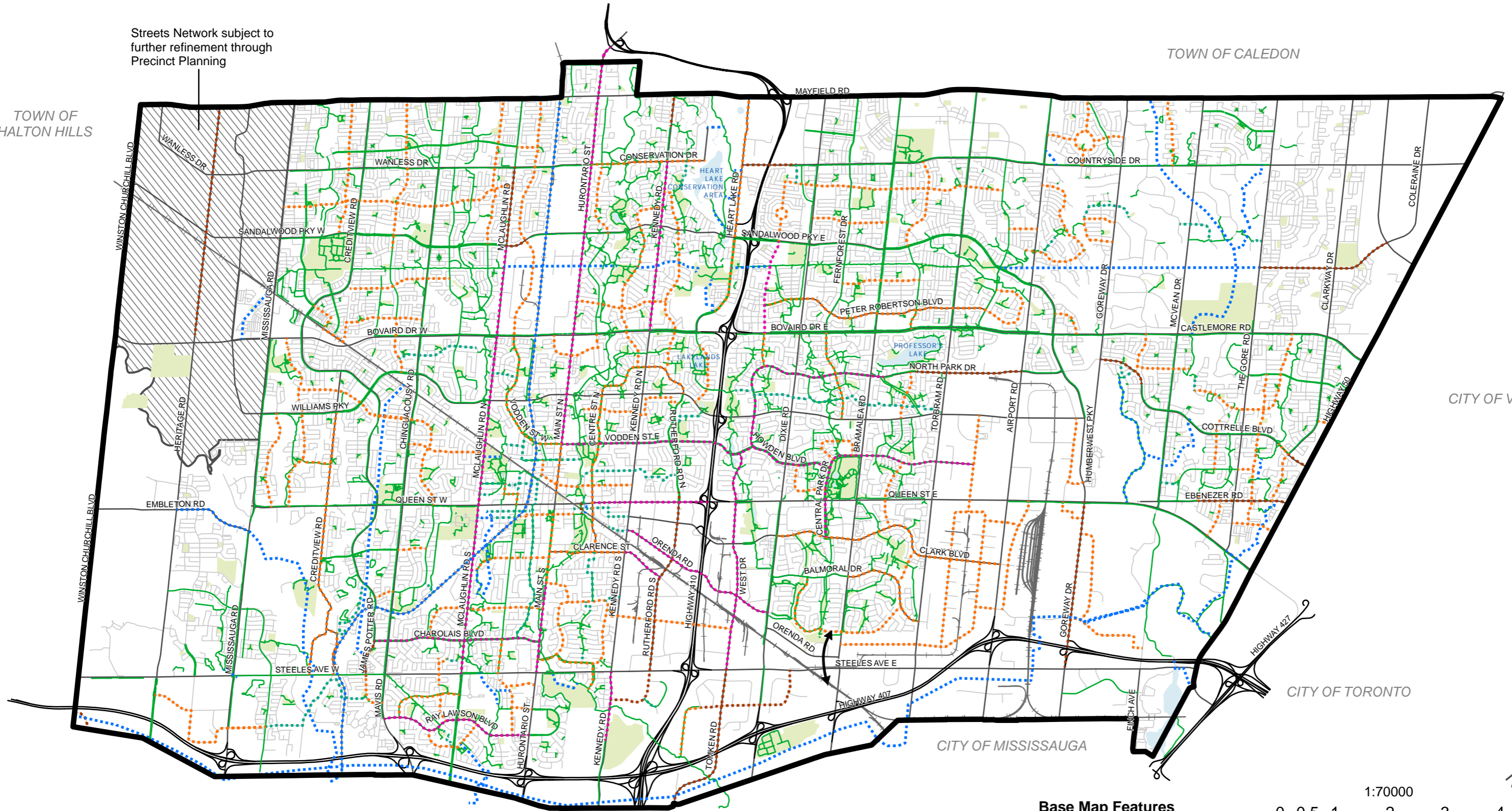
Date: September 2023
 Planning, Building and Economic Development
 Brampton Plan

This map forms part of the Official Plan of the City of Brampton and must be read in conjunction with the text, other schedules and secondary plans. The boundaries and alignments of designations and overlays on this schedule are approximate and are not intended to be scaled.

Streets Network subject to further refinement through Precinct Planning

TOWN OF CALEDON

TOWN OF HALTON HILLS



CITY OF VAUGHAN

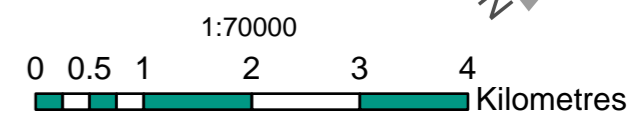
CITY OF TORONTO

CITY OF MISSISSAUGA

- Proposed Facilities**
- Existing Facilities
 - Parks
 - Waterbodies
 - ▨ Heritage Heights
 - Protected Bike Lane or Cycle Track
 - Bike Lane or Buffered Bike Lane
 - Shared Roadway
 - Multi Use Path
 - Recreational Trail
 - Desired GO Connection

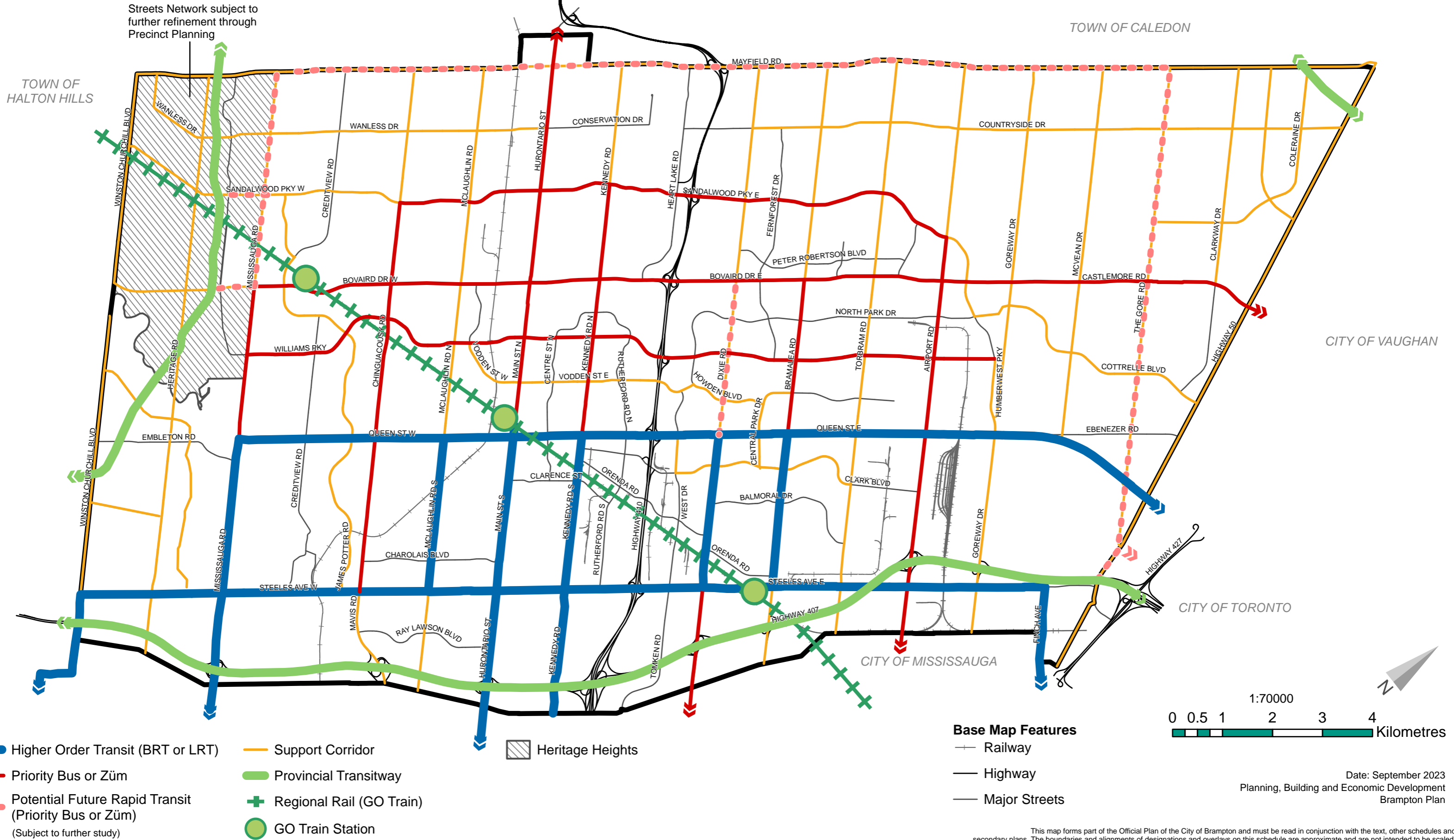
Base Map Features

- Railway
- Highway
- Major Streets
- Local Roads



Date: September 2023
 Planning, Building and Economic Development
 Brampton Plan

This map forms part of the Official Plan of the City of Brampton and must be read in conjunction with the text, other schedules and secondary plans. The boundaries and alignments of designations and overlays on this schedule are approximate and are not intended to be scaled.

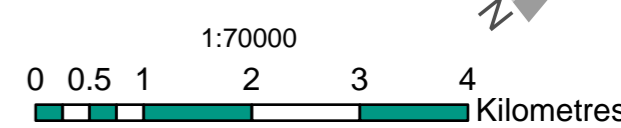


- ▬ Higher Order Transit (BRT or LRT)
- ▬ Priority Bus or Züm
- ⋯ Potential Future Rapid Transit (Priority Bus or Züm)
(Subject to further study)

- ▬ Support Corridor
- ▬ Provincial Transitway
- + Regional Rail (GO Train)
- GO Train Station

▨ Heritage Heights

- Base Map Features**
- Railway
 - Highway
 - Major Streets



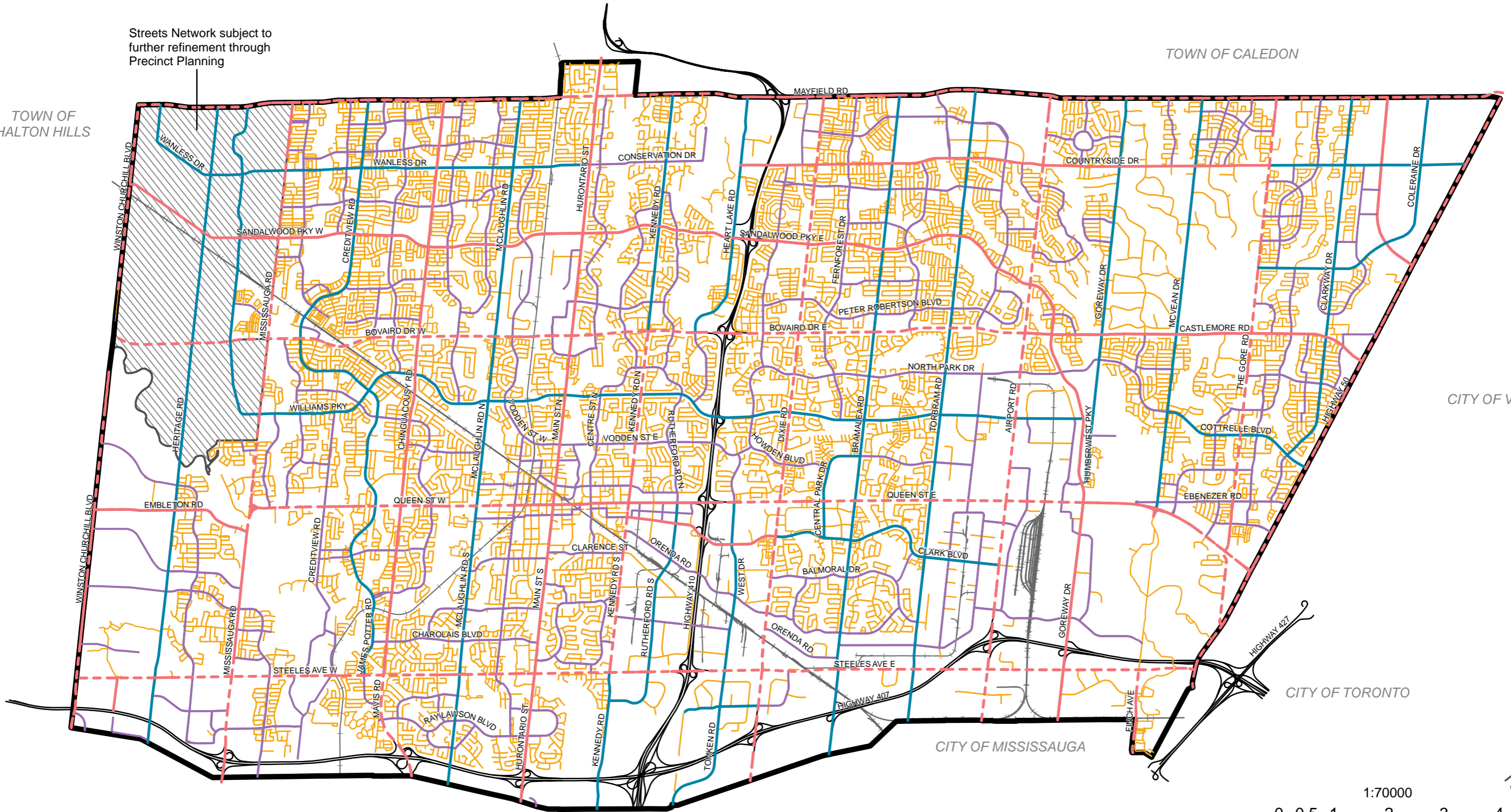
Date: September 2023
 Planning, Building and Economic Development
 Brampton Plan

This map forms part of the Official Plan of the City of Brampton and must be read in conjunction with the text, other schedules and secondary plans. The boundaries and alignments of designations and overlays on this schedule are approximate and are not intended to be scaled.

Streets Network subject to further refinement through Precinct Planning

TOWN OF CALEDON

TOWN OF HALTON HILLS



CITY OF VAUGHAN

CITY OF TORONTO

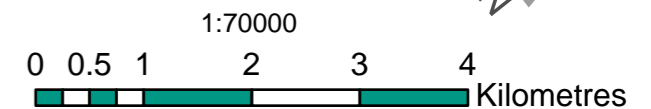
CITY OF MISSISSAUGA

Functional Street Classification

- Major Arterial (City)
- Major Arterial (Regional)
- Minor Arterial
- Collector
- Local
- Heritage Heights

Base Map Features

- Railway
- Highway



Date: September 2023
Planning, Building and Economic Development
Brampton Plan

This map forms part of the Official Plan of the City of Brampton and must be read in conjunction with the text, other schedules and secondary plans. The boundaries and alignments of designations and overlays on this schedule are approximate and are not intended to be scaled.

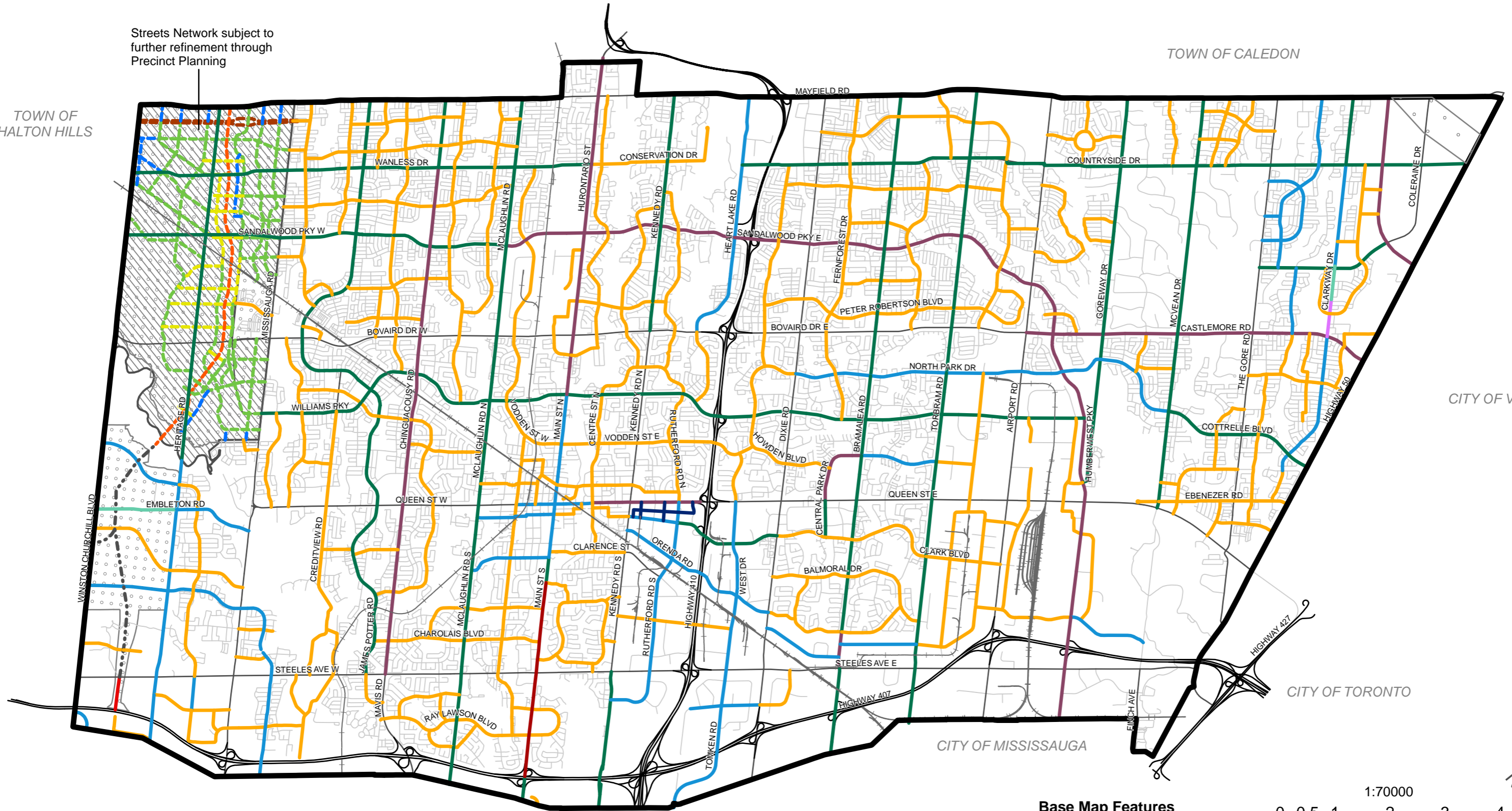
SCHEDULE 3C | STREETS NETWORK



Streets Network subject to further refinement through Precinct Planning

TOWN OF CALEDON

TOWN OF HALTON HILLS



CITY OF VAUGHAN

CITY OF TORONTO

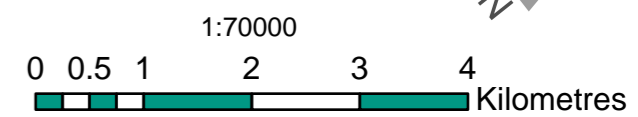
CITY OF MISSISSAUGA

- 20 Metres
- - - 20-25 Metres
- 23-26 Metres
- - - 25-30 Metres
- 26-30 Metres
- 30 Metres
- 31.5 Metres
- - - 30-35 Metres
- - - 35-65 Metres
- 36 Metres
- - - 40-100 Metres
- 40-45 Metres
- 50-55 Metres
- - - 50-100 Metres
- - - 95-115 Metres

- Corridor Protection Area
- Heritage Heights

Base Map Features

- Railway
- Highway
- Regional Roads
- Local Roads (17-20 Metres)



Date: September 2023
 Planning, Building and Economic Development
 Brampton Plan

This map forms part of the Official Plan of the City of Brampton and must be read in conjunction with the text, other schedules and secondary plans. The boundaries and alignments of designations and overlays on this schedule are approximate and are not intended to be scaled.

Streets Network subject to further refinement through Precinct Planning

TOWN OF HALTON HILLS

TOWN OF CALEDON

Pearson Airport Hub (Highway 50 Corridor) – Zone 15





CITY OF VAUGHAN





Pearson Airport Hub (Airport) – Zone 14

401/407 (Meadowvale) – Zone 18


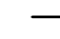

CITY OF TORONTO

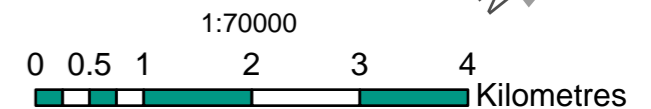
CITY OF MISSISSAUGA

-  Downtown Brampton Urban Growth Centre
-  Built-up Area
-  Designated Greenfield Area
-  Provincially Significant Employment Zones (PSEZ)

-  Heritage Heights
-  Parkway Belt West Plan
-  Greenbelt Plan
-  Regional Intensification Corridor

Base Map Features

-  Railway
-  Highway
-  Major Streets



Date: September 2023
 Planning, Building and Economic Development
 Brampton Plan

This map forms part of the Official Plan of the City of Brampton and must be read in conjunction with the text, other schedules and secondary plans. The boundaries and alignments of designations and overlays on this schedule are approximate and are not intended to be scaled.

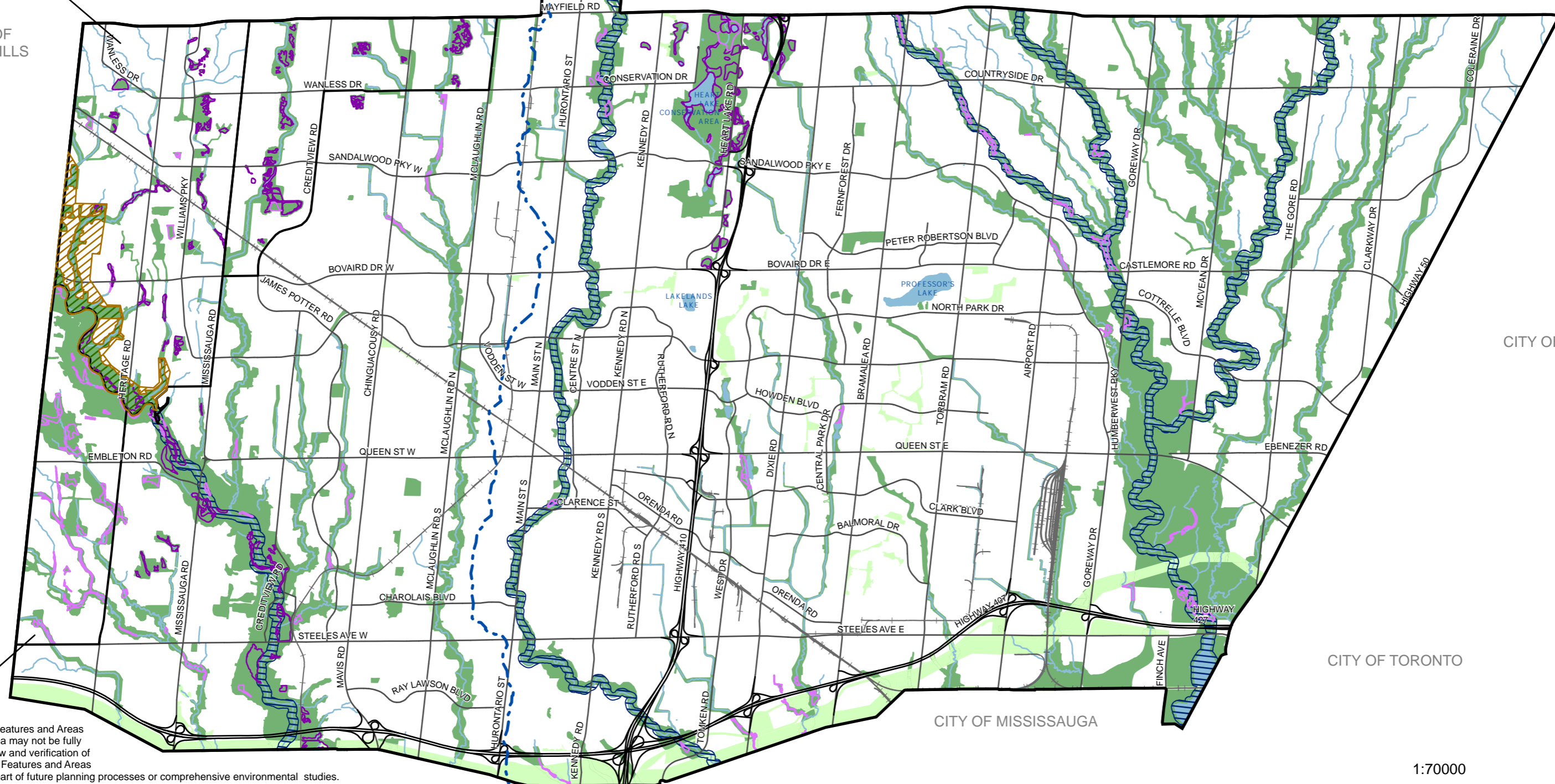
SCHEDULE 5 | PROVINCIAL PLANS & POLICY AREAS



The natural heritage system contained within Area 52 Heritage Heights is subject to a completed Subwatershed Study and the policies of the Secondary Plan, and to further refinements through Precinct Planning.

Credit Valley Conservation Authority
Toronto and Region Conservation Authority

TOWN OF HALTON HILLS

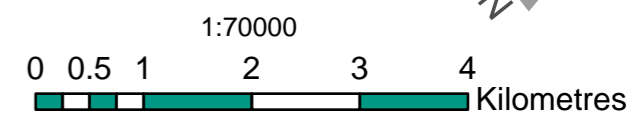


CITY OF VAUGHAN

CITY OF TORONTO

CITY OF MISSISSAUGA

The Natural Heritage Features and Areas within the identified area may not be fully accurate. Further review and verification of these Natural Heritage Features and Areas will be undertaken as part of future planning processes or comprehensive environmental studies.



- Natural Heritage System
- Linkages and Enhancement Areas
- Conservation Authority Boundaries
- Provincially Significant Wetland
- Unevaluated/Other Wetland
- Greenbelt Plan (Protected Countryside Area)
- Greenbelt Plan (Natural Heritage System Overlay)
- Water Resources System

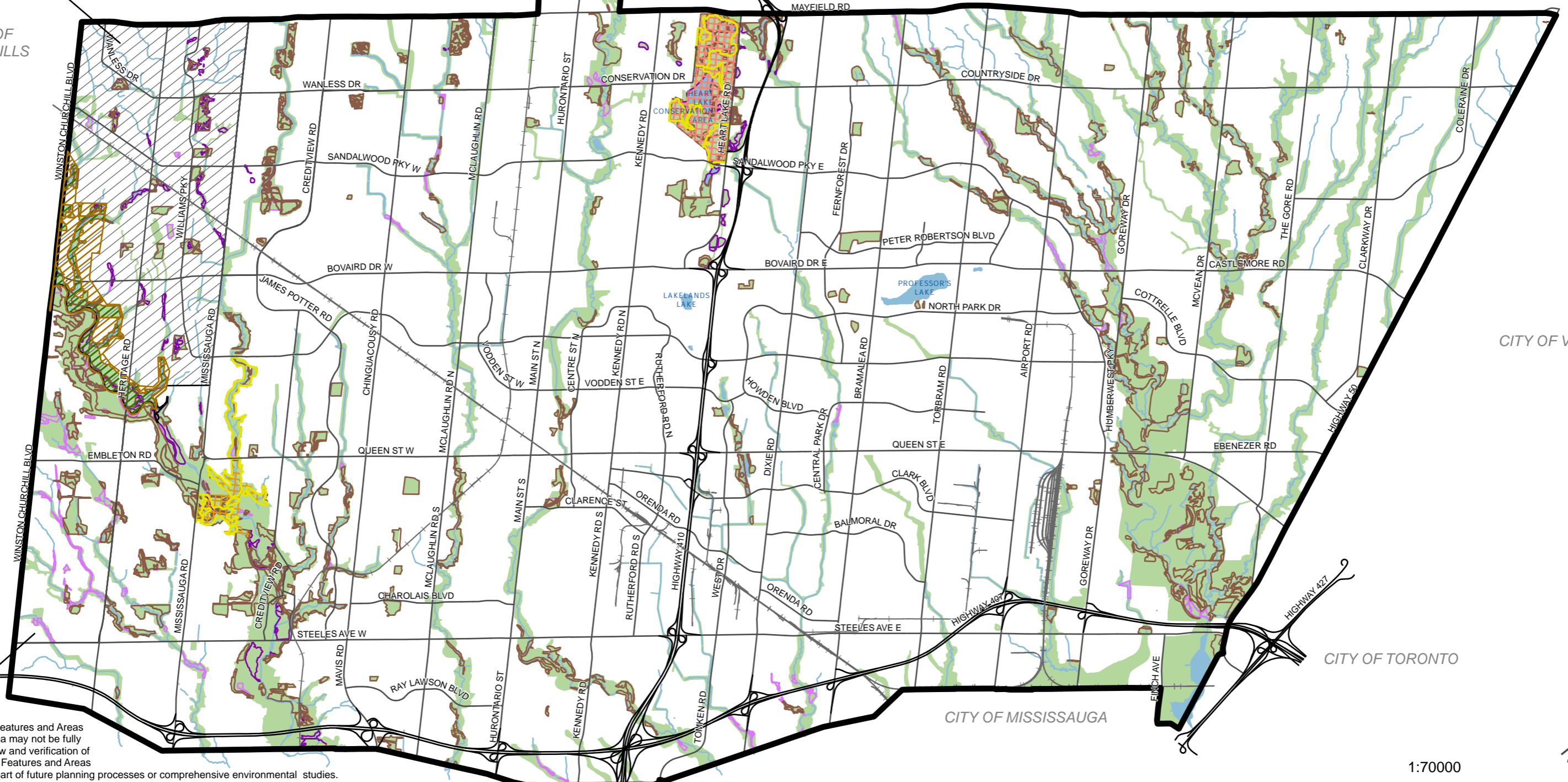
- Base Map Features**
- Railway
 - Highway
 - Major Streets

Date: September 2023
Planning, Building and Economic Development
Brampton Plan

This map forms part of the Official Plan of the City of Brampton and must be read in conjunction with the text, other schedules and secondary plans. The boundaries and alignments of designations and overlays on this schedule are approximate and are not intended to be scaled.

The natural heritage system contained within Area 52 Heritage Heights is subject to a completed Subwatershed Study and the policies of the Secondary Plan, and to further refinements through Precinct Planning.

TOWN OF HALTON HILLS



CITY OF VAUGHAN

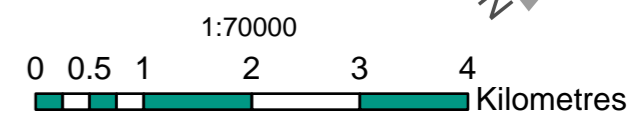
CITY OF TORONTO

CITY OF MISSISSAUGA

The Natural Heritage Features and Areas within the identified area may not be fully accurate. Further review and verification of these Natural Heritage Features and Areas will be undertaken as part of future planning processes or comprehensive environmental studies.

- | | | | |
|-------------------------------------|--|--|------------------------|
| Valleyland and Watercourse Corridor | Areas of Natural and Scientific Interest - Earth Science | Greenbelt Plan (Protected Countryside Area) | Water Resources System |
| Woodland | Areas of Natural and Scientific Interest - Life Science | Greenbelt Plan (Natural Heritage System Overlay) | |
| Provincially Significant Wetland | Environmentally Sensitive Significant Area | Heritage Heights | |
| Unevaluated/Other Wetland | | | |

- Base Map Features**
- Railway
 - Highway
 - Major Streets



Date: September 2023
 Planning, Building and Economic Development
 Brampton Plan

This map forms part of the Official Plan of the City of Brampton and must be read in conjunction with the text, other schedules and secondary plans. The boundaries and alignments of designations and overlays on this schedule are approximate and are not intended to be scaled.

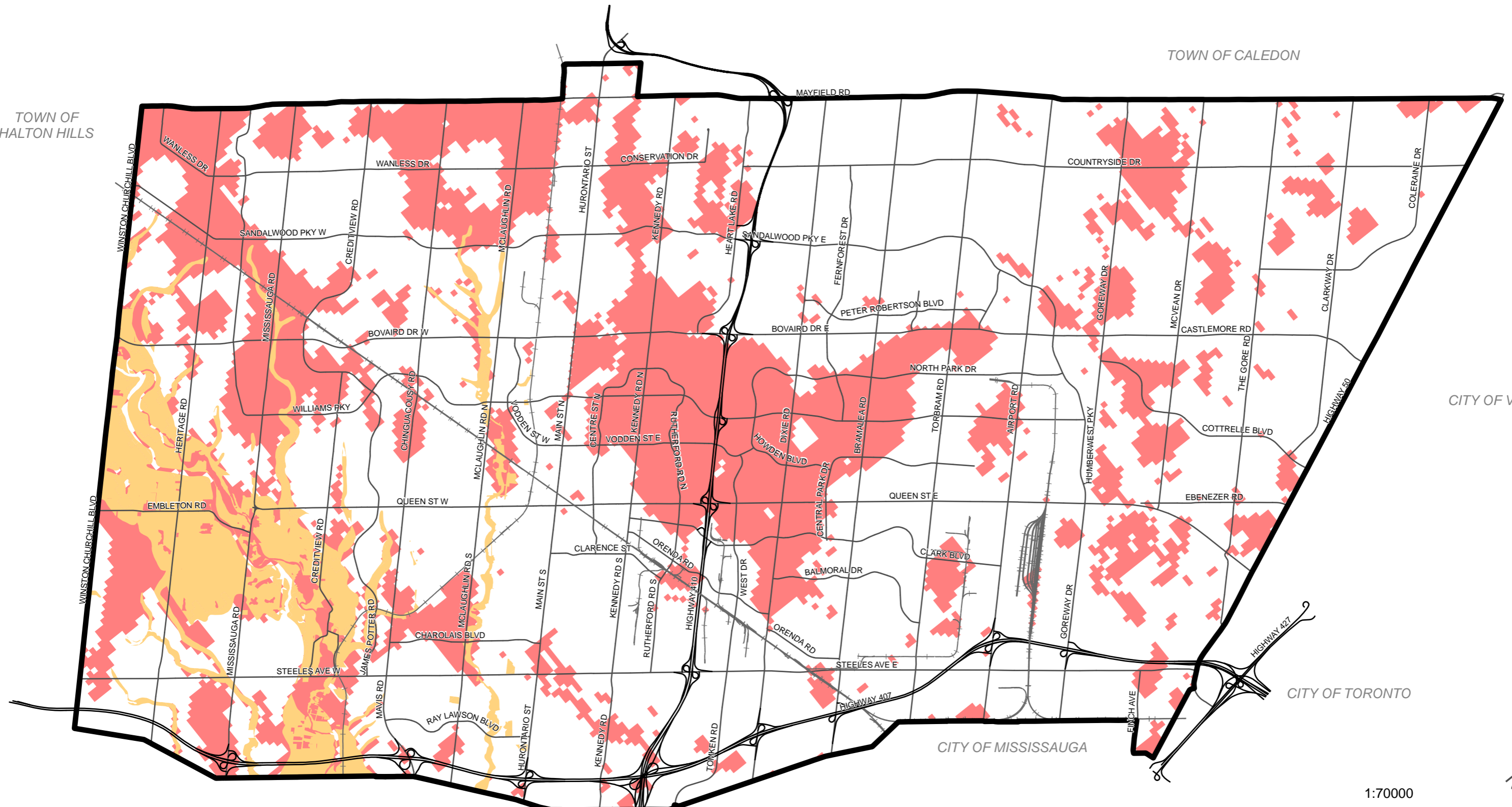
TOWN OF HALTON HILLS

TOWN OF CALEDON

CITY OF VAUGHAN

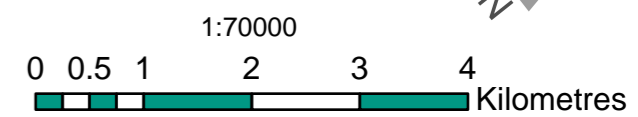
CITY OF TORONTO

CITY OF MISSISSAUGA



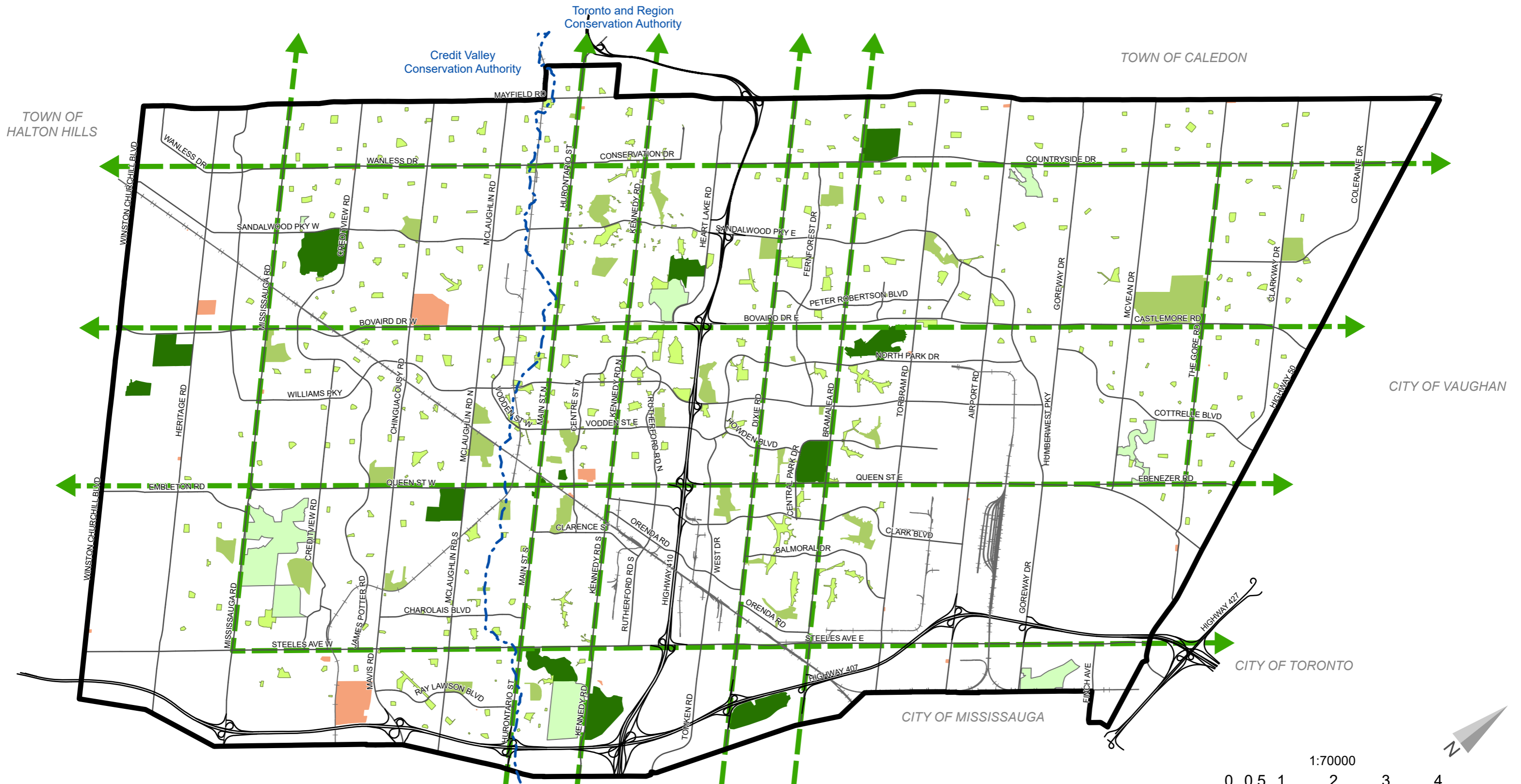
- Significant Groundwater Recharge Areas
- Highly Vulnerable Aquifers

- Base Map Features**
- Railway
 - Highway
 - Major Streets



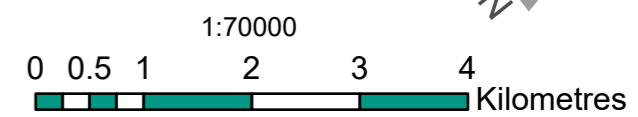
Date: September 2023
 Planning, Building and Economic Development
 Brampton Plan

This map forms part of the Official Plan of the City of Brampton and must be read in conjunction with the text, other schedules and secondary plans. The boundaries and alignments of designations and overlays on this schedule are approximate and are not intended to be scaled.



- City Park
- Private Commercial Recreation
- Community Park
- Greenway Boulevards
- Neighbourhood Park
- Conservation Authority Boundaries
- Cemetery

- Base Map Features**
- Railway
 - Highway
 - Major Streets

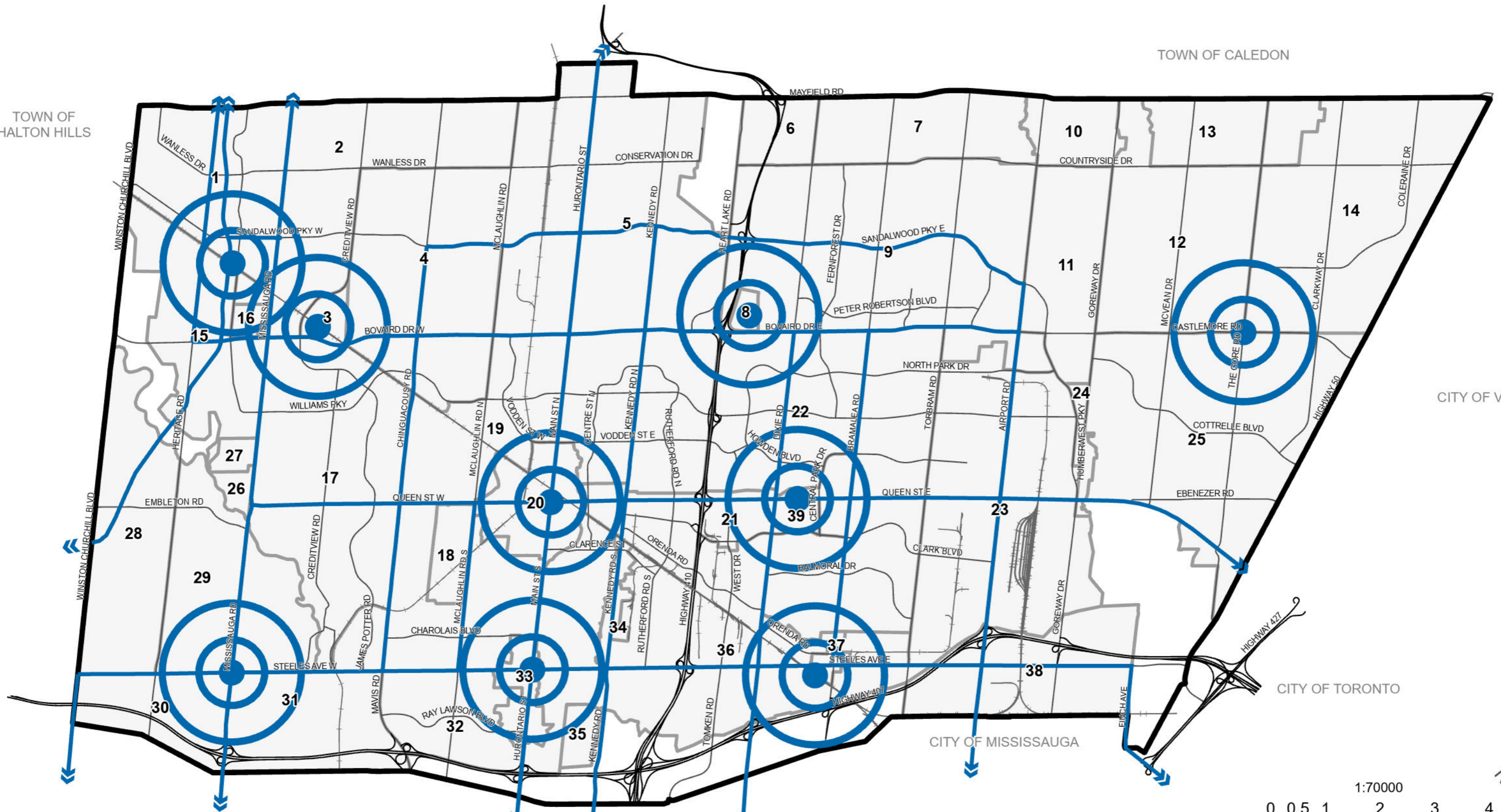


Date: September 2023
 Planning, Building and Economic Development
 Brampton Plan

This map forms part of the Official Plan of the City of Brampton and must be read in conjunction with the text, other schedules and secondary plans. The boundaries and alignments of designations and overlays on this schedule are approximate and are not intended to be scaled.

TOWN OF HALTON HILLS

TOWN OF CALEDON



CITY OF VAUGHAN

CITY OF TORONTO

CITY OF MISSISSAUGA

Energy Planning Districts

District Energy Areas

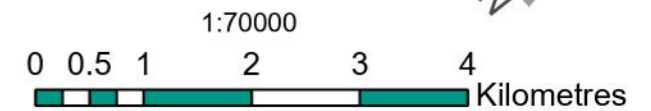
Subject to further refinement through the completion of future feasibility studies.

Base Map Features

Railway

Highway

Major Streets



Date: September 2023

Planning, Building and Economic Development
Brampton Plan

This map forms part of the Official Plan of the City of Brampton and must be read in conjunction with the text, other schedules and secondary plans. The boundaries and alignments of designations and overlays on this schedule are approximate and are not intended to be scaled.

SCHEDULE 8 | PROPOSED ENERGY PLANNING DISTRICTS



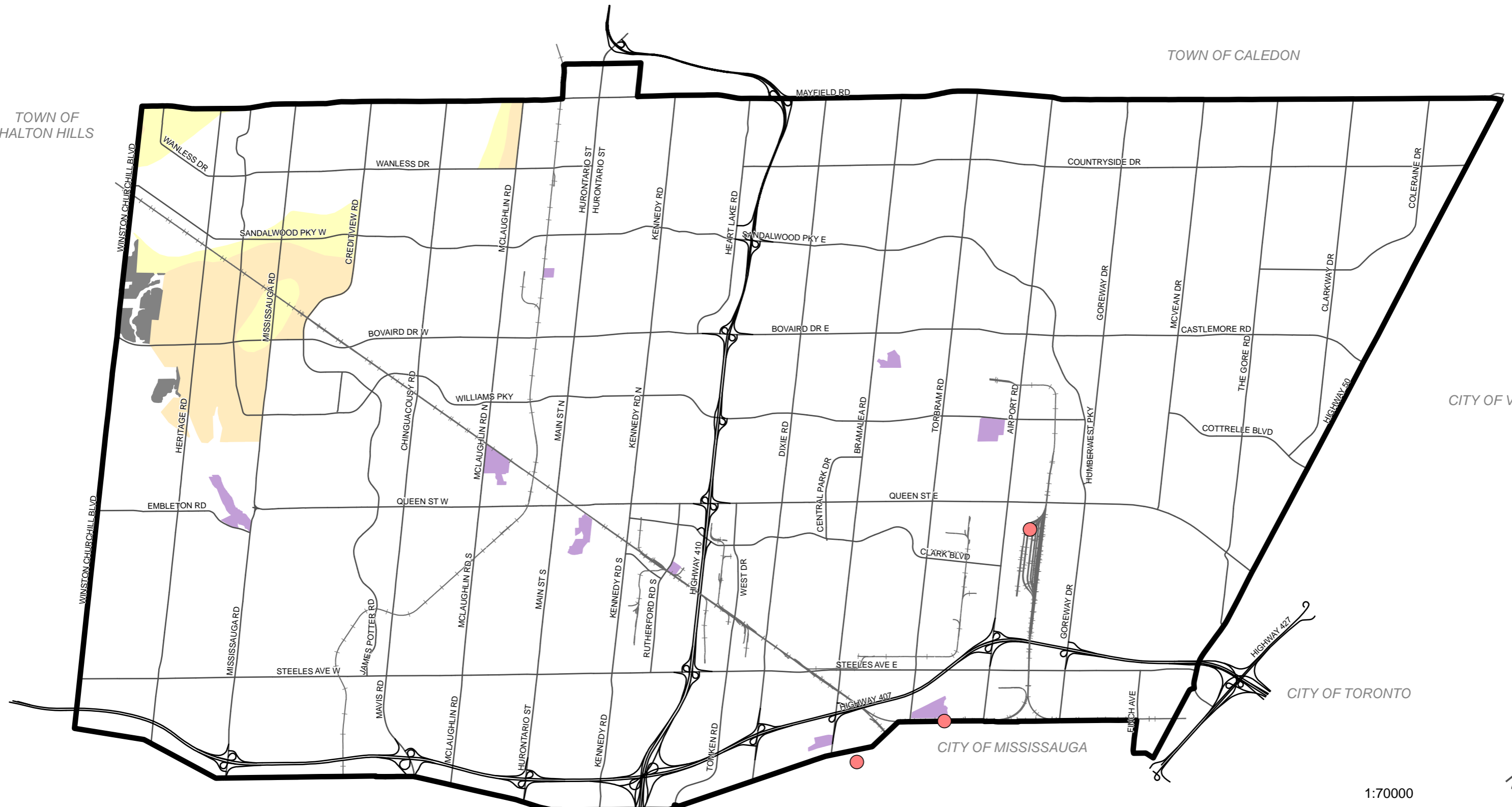
TOWN OF HALTON HILLS

TOWN OF CALEDON

CITY OF VAUGHAN

CITY OF TORONTO

CITY OF MISSISSAUGA



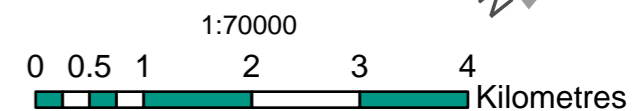
Bedrock Aggregate Resource Deposits Overburden Thickness within Designated Greenfield Area

- Less than 1 m
- 1 m to 8 m
- 8 m to 15 m

Base Map Features

- Railway
- Highway
- Arterial Roads

- Waste Management Sites
- High Potential Mineral Aggregate Resource Area (HPMARA)
- CN Intermodal Facilities



Date: September 2023
Planning, Building and Economic Development
Brampton Plan

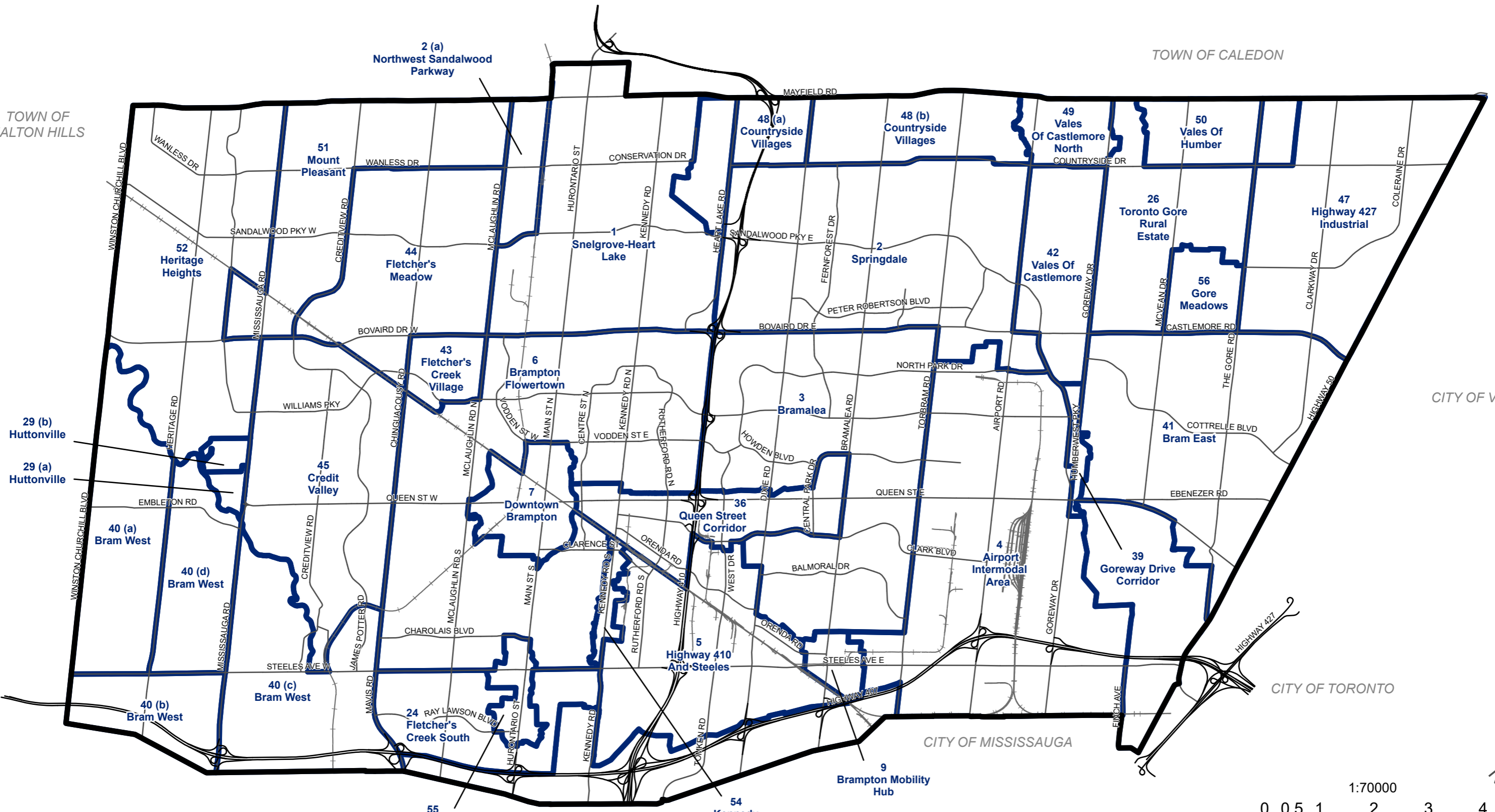
This map forms part of the Official Plan of the City of Brampton and must be read in conjunction with the text, other schedules and secondary plans. The boundaries and alignments of designations and overlays on this schedule are approximate and are not intended to be scaled.

SCHEDULE 9 | MAJOR DEVELOPMENT INFLUENCES



TOWN OF HALTON HILLS

TOWN OF CALEDON



CITY OF VAUGHAN

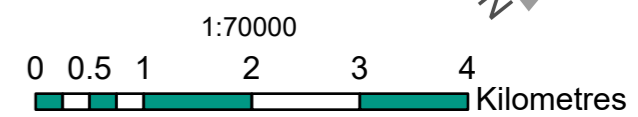
CITY OF TORONTO

CITY OF MISSISSAUGA

Secondary Plan

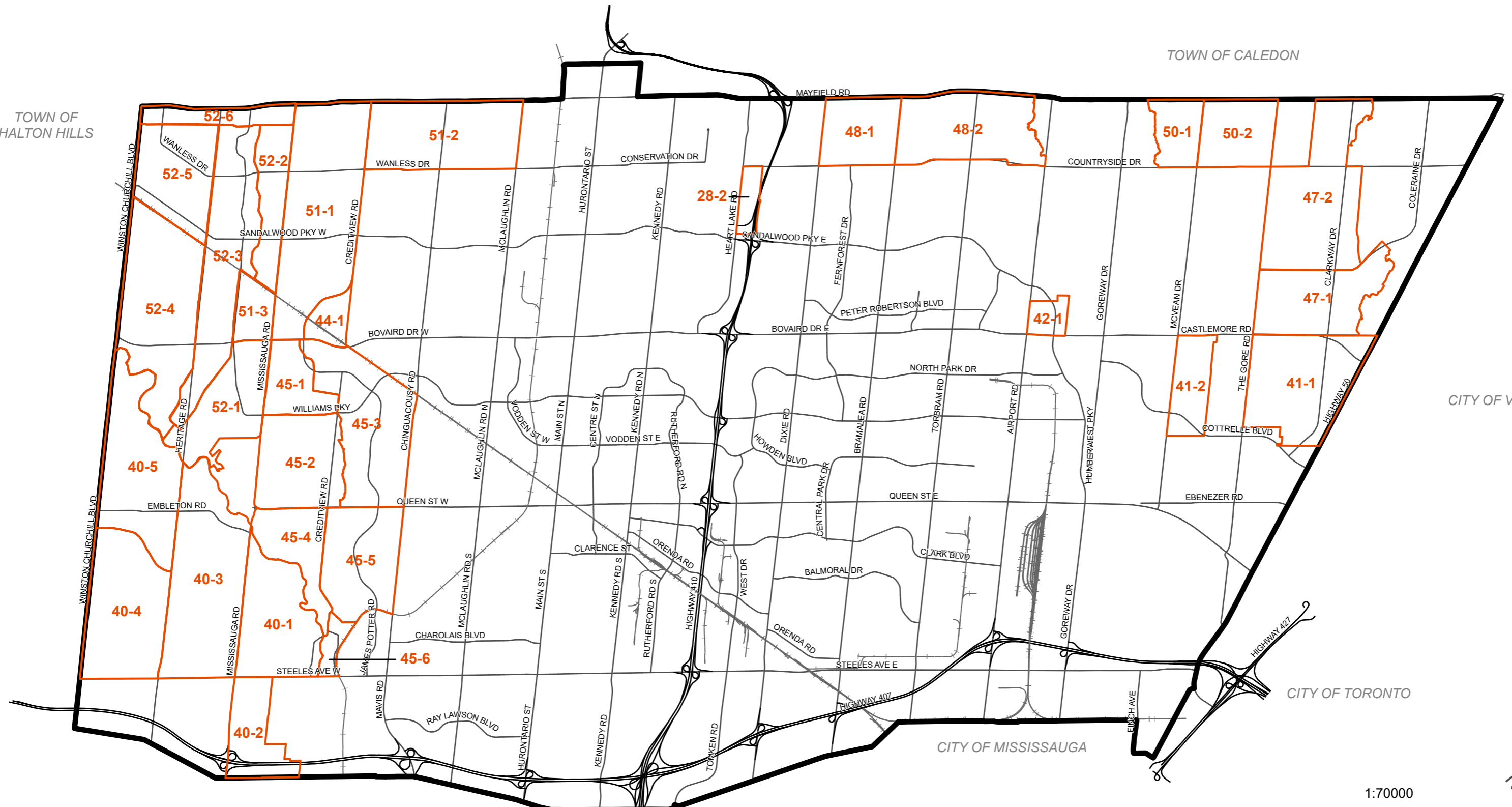
Base Map Features

- Railway
- Highway
- Major Streets



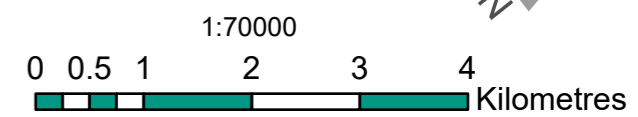
Date: September 2023
 Planning, Building and Economic Development
 Brampton Plan

This map forms part of the Official Plan of the City of Brampton and must be read in conjunction with the text, other schedules and secondary plans. The boundaries and alignments of designations and overlays on this schedule are approximate and are not intended to be scaled.



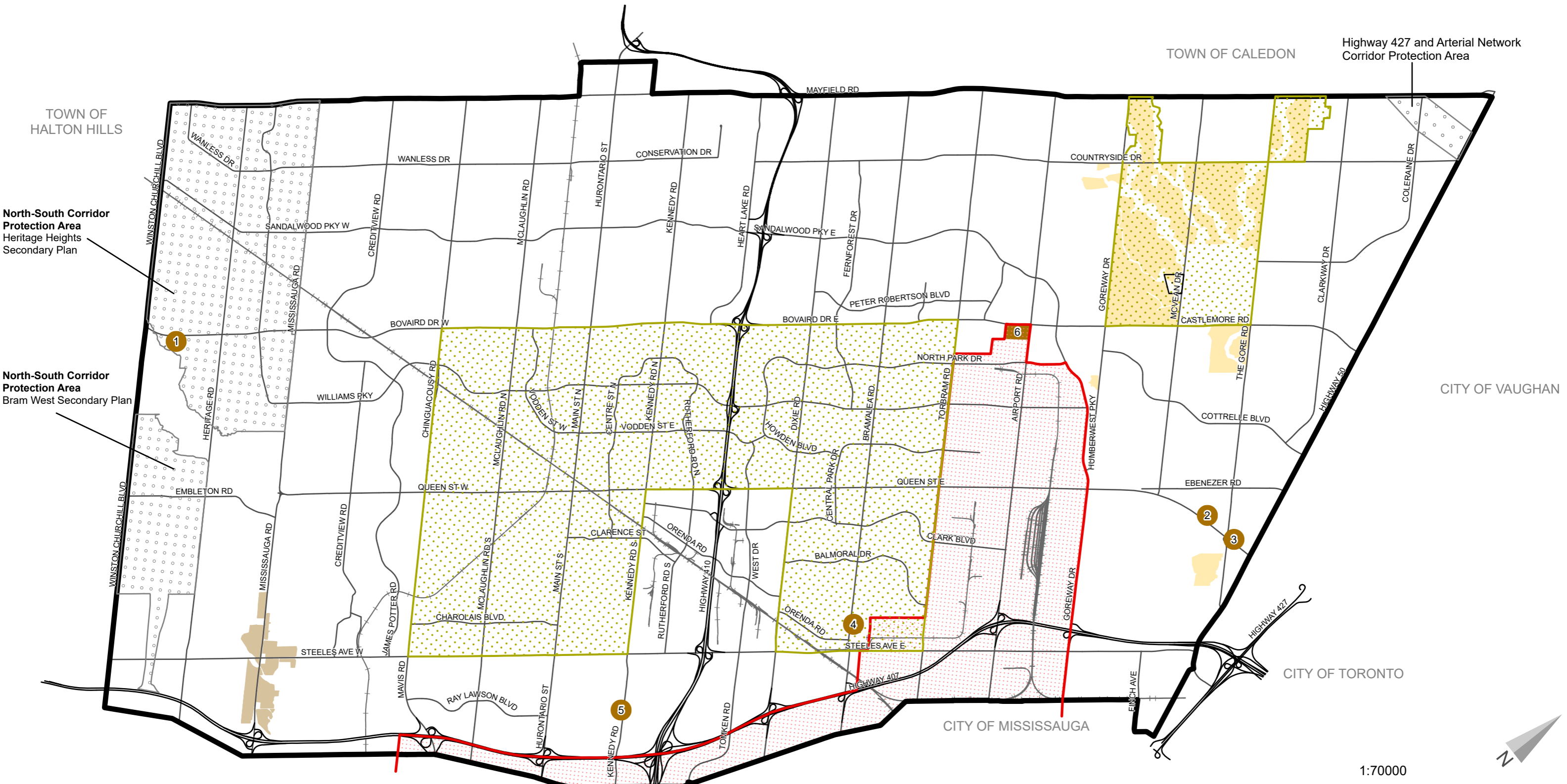
Precinct Plan Area

- Base Map Features**
- Railway
 - Highway
 - Major Streets



Date: September 2023
 Planning, Building and Economic Development
 Brampton Plan

This map forms part of the Official Plan of the City of Brampton and must be read in conjunction with the text, other schedules and secondary plans. The boundaries and alignments of designations and overlays on this schedule are approximate and are not intended to be scaled.

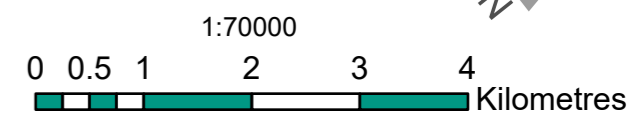


- Lester B. Pearson International Airport (LBPIA) Operating Area
- Mature Neighbourhoods
- Established Rural Estate Residential Area

- Special Land Use Policy Areas
- Corridor Protection Area

- Special Study Areas**
- McVean Drive/Rae Avenue Special Study Area
 - Mississauga Road Corridor

- Base Map Features**
- Railway
 - Highway
 - Major Streets



Date: September 2023
 Planning, Building and Economic Development
 Brampton Plan

This map forms part of the Official Plan of the City of Brampton and must be read in conjunction with the text, other schedules and secondary plans. The boundaries and alignments of designations and overlays on this schedule are approximate and are not intended to be scaled.